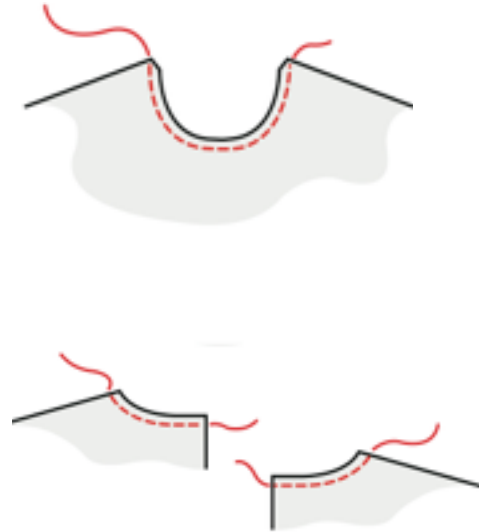


1 PREPARE THE PIECES

Staystitch the necklines of the front and back pieces

1 cm (3/8 in.) from the cut edge.



2 STITCH THE BUST DARTS

Pin and stitch the bust darts on the front piece. Press the darts down towards the hem.



3 STITCH SHOULDER SEAMS

With right sides together, pin the front piece to the back pieces along the shoulder seams. Machine stitch.

Neaten the seam allowances and press the seams open.



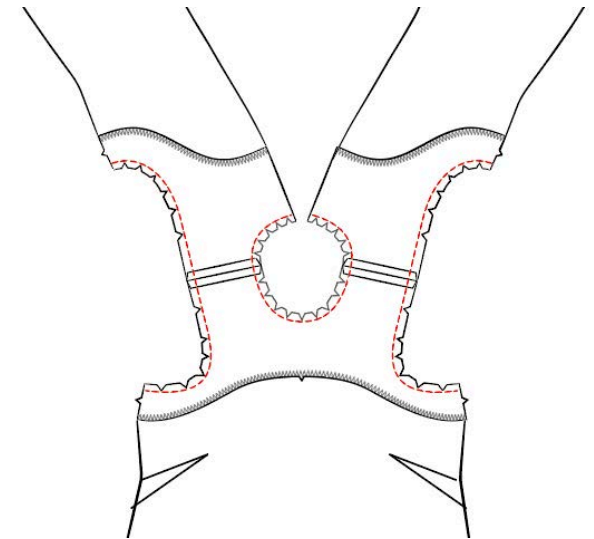
4

Stitch the facings together at the shoulder seams in the same way. Hem the facing pieces by zigzagging the raw lower edges.



5 ATTACH FACING TO NECKLINE & ARMHOLES

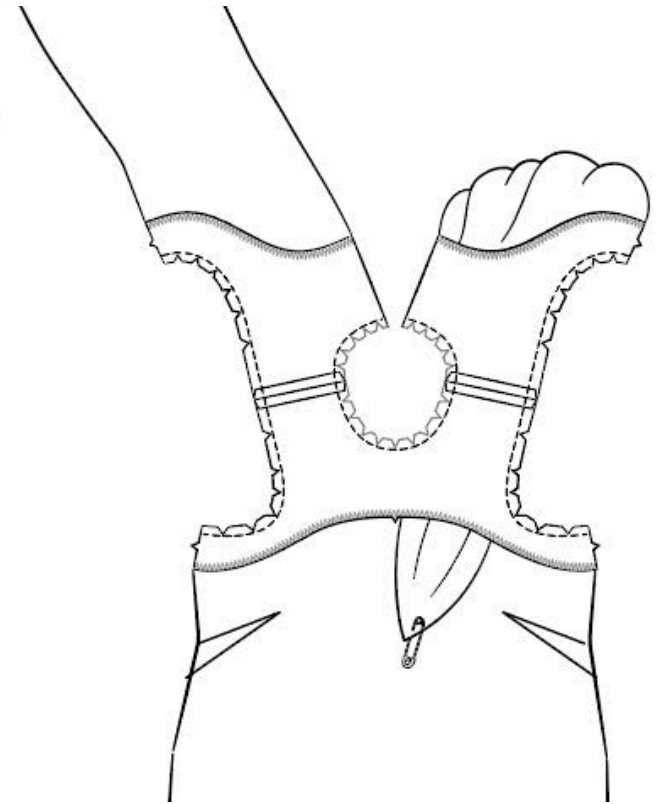
Lay the top flat, with the right side facing up. Lay the facing right side down over the top, matching up the cut edges of the neckline and the shoulder seams. Pin, then sew around the neckline and armholes (As it's a curved seam, take care to sew slowly.) Clip around the curves to allow the edges to sit flat when turned right side out, OR trim seam allowance down to 0.5cm



8 TURN FACING THROUGH

Attach a safety pin to one corner of each back piece. Use the safety pin to slide the first back piece through the 'tunnel' at the shoulder through to the right side.

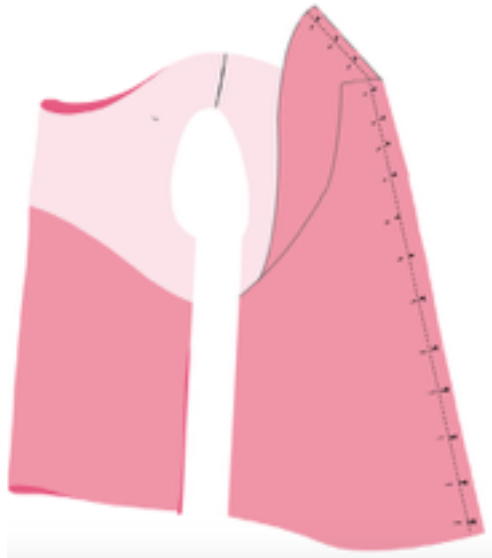
Repeat on opposite shoulder.



9 From the wrong side, press the facing really flat around the armholes and neckline, rolling the seam lines in towards the wrong side as you press.

10 STITCH UP THE CENTRE BACK

With the blouse inside out, Right sides together lift up the facing at the Centre back seam. Pin and stitch the back seam from the top of the facing through the facing seam all the way down to the hem; be sure that the seam joining the facing matches perfectly. Press the seam open, and neaten. Then turn the facing to the inside of the garment and press the neckline edge.



11 SEW UP THE SIDE SEAMS

With the right sides together lift up the facing at the side seams and pin. Stitch the side seams from the top of the facing through the underarm seam all the way to the hem; be sure to match the underarm seams and notches. Press the seams open, neaten and turn the facing to the wrong side of the garment, pressing the armhole edge. Use a hand stitch to secure the hem of the facing to the side seams.



12 FINISH THE GARMENT

Zigzag over the raw edge of the hem.

Press a narrow 1-cm (3/8-in.) hem towards the wrong side of the blouse, pin in place and machine stitch

